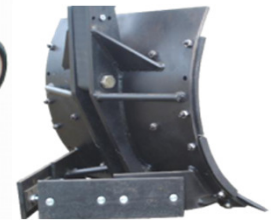




NEW! 9400-Series In-Furrow Plows



6306 On-Land Plow



Plow Bottom Detail

9400 IN-FURROW PLOW **Stock No** **Weight** **List**

4-Bottom 18", shear bolt, 7"x7"x.5" main frame, adjustable rear gauge wheel, new swing cylinder lock mechanism, steel wing covers, heat treated points, steel landsides, for 100-140 hp minimum	9404		\$11,706
3-Bottom (4-1) 18", DEDUCT 1 BTM1 from 9404 plow, for 75-105 hp minimum	9403		\$9,956
5-Bottom (4+1) 18", ADD 1 BTM1 plus 1 BEAM2 to 9404 plow, for 125-175 hp min	9405		\$13,556
Bottom kit, bolts to plow beam, steel wing covers, heat treated points, steel landsides	BTM1		\$1,750
Beam extension, 2-foot, with bolts/nuts	BEAM2		\$100

6300 ON-LAND PLOW **Stock No** **Weight** **List**

6-Bottom 18", shear bolt, 7"x7"x.5" main frame, front & rear gauge wheels, steel wing covers, heat treated points, steel landsides, for 150-210 hp minimum	6306		\$19,939
5-Bottom (6-1) 18", DEDUCT 1 BTM1 from 6306 plow, for 125-175 hp minimum	6305		\$18,560
7-Bottom (6+1) 18", ADD 1 BTM1 plus 1 BEAM2 to 6306 plow, for 175-245 hp min	6307		\$22,234
8-Bottom (6+2) 18", ADD 2 BTM1 plus 2 BEAM2 to 6306 plow, for 200-280 hp min	6308		\$24,121
Bottom kit, bolts to plow beam, steel wing covers, heat treated points, steel landsides	BTM1		\$1,750
Beam extension, 2-foot, with bolts/nuts	BEAM2		\$100

PLOW OPTIONS **Stock No** **Weight** **List**

UHMW polyethylene wing covers, for sticky soils, DEDUCT per bottom			(\$85)
Hard-surface points, ADD per bottom			\$70

BENEFITS WITH HARRELL PLOWS

- Plows are mostly pre-assembled. Dealer labor time is only 1-2 hours per plow.
- All models can add or delete bottoms for future change and higher resale value.
- All models use the same bottoms, beam extensions and tailwheels, for easy parts stocking.
- All models have easy-adjust tailwheels, including the 9403 3-bottom, for depth control.
- All wear parts interchange with the original Harrell and LMC plows, for parts sales opportunities.



FREIGHT, FOB Logan UT; Delivery for one plow is \$1/mile from Logan UT. Call for higher quantities.
 ASSEMBLY: 9400 plow \$100; 6300 plow \$200
 All orders are also subject to the dealer Sales & Security Agreement, our latest Discounts and Terms, and credit approval.